

## PRODUCTS



1



2

1 MOBILE  
CONCRETE  
PLACER

2 STACKER  
CONVEYOR &  
TRUCK  
UNLOADER



3



4

3 PORT HANDLING  
CONVEYOR

4 MINES & BULK  
HANDLER  
TRACK / WHEEL TYPE



5



6

5 WALK BEHIND  
ROLLER  
SLOPE COMPACTOR

6 MOBILE CONCRETE  
BATCHING PLANT



7



8

7 MOBILE READY MIX  
CONCRETE PLANT

8 TRUCK MOUNTED  
MOBILE CONCRETE  
BATCHING PLANT



9



10

9 READY MIX  
CONCRETE PLANT

10 WET MIX  
MACADAM  
PLANT



# SURELIA ENGINEERS

49, Jogeshwari Estate, F/O, Shankar Estate, Revabhai Estate Road, Amraiwadi,  
C.T.M., Ahmedabad - 380 026. (Guj.) INDIA. E-mail : [sureliaengineers@yahoo.com](mailto:sureliaengineers@yahoo.com)  
Cell : +91 99099 11462, +91 99099 12462



MFG. CONSTRUCTION & MINING MACHINERY

## MATERIAL HANDLING CONVEYOR

We would like to introduce our company "SURELIA ENGINEERING WORKS" that has been in business for the past 30 years.

We have been an established and popular company with an excellent track record for the best customer satisfaction. We have never compromised on the quality of the services provided to the customer.

We have an excellent staff who will guide you with their best understanding for your needs with analysis.

**APPLICATION :** Coal Yard, Ports, Minerals and Mining operations, Barge Loading, Wagon Loading and Mass Concreting

**TYPE : MOBILE / STATIONARY**

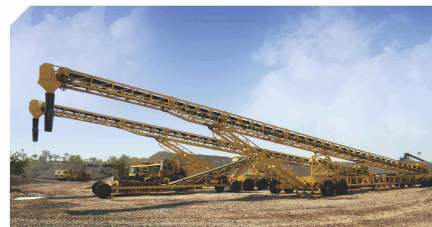
### EFFECTIVE FACTORS :

- Proven best method of stock piling in the industry for maintaining material quality.
- More capacity on same foot print compared to conventional methods.
- Provides a higher quality product at a lower stock piling cost/tonne.
- Eliminates need for wheel loaders to build stock piles and reduce labour and maintenance cost.
- Eliminates double handling of material.
- Ability to handle complete range of materials such as Concrete, Coal, Grain, Ores, Fertilizer, Bauxite, Sulphur, Cement, Clinker etc.
- Customized length available
- Quick setup and manoeuvre around site.
- Easily utilized in fixed and mobile crushing and screening operations.
- Heavy duty engineered equipment with rugged construction and quality weld.

All the systems supplied by us are designed to provide years of reliable service under the most rugged job site conditions. The equipment manufactured by us, to provide you with the right product for your application at competitive prices using the highest quality components.

**We also specialize in designing and customizing to meet the specific needs of the customer.**

All the conveyors can be customized according to available space, discharge height, type of mobility and type of material to get faster production by reducing higher process cycle time



MASS CONCRETING  
& STACKING



BARGE LOADING  
& RAIL CAR LOADING



MINES AND BULK HANDLER

## MINES & BULK HANDLER TRACK / WHEEL TYPE



"Track-mounted Conveyor" from Surelia Engineering Works, offers Complete Conveyor Solutions- proven engineering, design and technology to provide our customers with the best solutions to their bulk material handling applications which engineered for all movement or action that requires skill or dexterity with toughness, efficiency, reliability and on-site maneuverability of equipment which reducing the need for haul trucks, loaders and additional labour and material handling.

Conveyors are self-contained, equipped with hydraulic power to the tracks-drive, elevating and fold functions. Our product provides production solutions across a vast range of applications ranging from 15 to 600 tons with electric or diesel engine/ per hour for Coke, Coal, Lime etc. and can also used to stockpile large quantities of minerals/materials.

### MACHINE SPECIFICATION:

- Belt Width : 1200mm (Chevron)
- Hopper Opening : 4000mm x 1850mm
- Drag Conveyor for Feeding Hopper : 800mm
- Power : 82.5 HP
- Drive : Hydraulic
- Machine Weight : 29,000 kgs.
- Telescopic "H" Frame for Height adjustment

### FEATURES AND BENEFITS:

- Low cost Stockpiling Solution.
- Optimum Flexibility and Mobility with the highest possible performance.
- Heavy Duty Steel Construction.
- Quick set up time.
- Proven reliability.
- Hydraulic folding Conveyor (Head section).
- Wear resistant hopper liner plates.
- Output Capacity of Conveyor: 250 TPH.
- Discharge Height: 4 Mtrs to 10 Mtrs
- Stock Piling Area: Dia 21 Mtrs x Height - 10 Mtrs



## MOBILE CONCRETE BATCHING PLANT

MCB – 15

MCB – 20

MCB – 25



### SALIENT FEATURES:

- Available in 15 M<sup>3</sup> / 20 M<sup>3</sup> / 25 M<sup>3</sup> / hr. Capacity. • Rigid construction of main chassis is fabricated from rolled mild steel material. • Mixer – PAN type, for continuous mixing. • Replaceable Bottom Liner, Side Liner and Tips in the mixer. • Compact design for easy transportation with towing facility. • Loading of aggregate/Sand in hoppers by Wheel loader / JCB. • PLC based control panel with integral computerized batch controller to accommodate 9 different mix recipes. • Fully Automatic Plant with Electronic Weighing of Aggregate/Sand/Water/ Cement. • Plant can be erected & commissioned within two days. • Inbuilt Water and Additive tank. • Complete plant can be transported in 40 foot trailer. • Provided with Discharge Belt Conveyor. • Plant only requires Electric Power Supply, Water Piping / Aggregate Sand feeding.

**OPTIONAL:** Cement Silo.

### TECHNICAL SPECIFICATION

MODEL	SURELIA-15	SURELIA-20	SURELIA-25
DIMENSIONS/BINS	4 Bins	4 Bins	4 Bins
Total Length	10.7 Mtr.	10.7 Mtr.	10.7 Mtr.
Total Width	2.14 Mtr.	2.14 Mtr.	2.14 Mtr.
Total Height	2.75 Mtr.	2.75 Mtr.	2.75 Mtr.
<b>PAN MIXER</b>			
Output Rate	12–15 M <sup>3</sup> /hr	18–20 M <sup>3</sup> /hr	22–25 M <sup>3</sup> /hr
Output/ Mix	600 Litre	600 Litre	600 Litre
Mixer Motor	20 HP	30 HP	30 HP
Sand/Aggregate	2 / 4 Hopper	2 / 4 Hopper	2 / 4 Hopper
Hopper Cap.	2.5 M <sup>3</sup>	3 M <sup>3</sup>	3.5 M <sup>3</sup>
Each Water Tank	750 Litre	750 Litre	750 Litre

MODEL	SURELIA-15	SURELIA-20	SURELIA-25
	4 Bins	4 Bins	4 Bins
Water Pump	1 No.	1 No.	1 No.
Additive Tank	Inbuilt	Inbuilt	Inbuilt
Additive Pump	1 No.	1 No.	1 No.
CONNECTED POWER	55 HP	70 HP	70 HP
Weight (Approx)	8.5 Ton	10 Ton	10 Ton

Specifications are subject to change without prior notice due to modification, alteration or custom engineering.



## MOBILE CONCRETE PLACER

MCP – 56

MCP - 56 / 650

MCP - 48

APPLICATION: Bridges, Culverts, Mass Concreting, Pre casting Yards and Canal Works



"SEW" Mobile Concrete Placer is available in 56 Feet length, pouring at the height of 8.5 mtr. & ability to fold for Towing without removing discharge hopper.

Mechanical power for the conveyor is provided by HA294, Kirloskar Engine, which drives a Hydraulic Tandem Pump. The Main Hydraulic pump provides power for the functions (A) and (B) while the secondary pump powers (C) (D) and (E). Hydraulic steering which pivots the two under carriage wheels at 90° to the Right and 45° to the Left and the steering wheel at the charging end rotates the towing hitch wheel 360° about its yoke, so the conveyor can be moved in a transverse and inline movement.

### WEIGHT / MEASUREMENTS:

Machine Weight	4500 Kg
Tyre size	6.50 x 10
(Single Tyre End 16)	
Tyre size (Drive)	7.50 x 16

### OVERALL DIMENSION:

Length	17 Meters Approx
Width	2.4 Meters Approx
Height	3.5 Meter Approx
Belt Width (MCP-56)	400 mm
Belt Width (MCP-56/650)	650 mm
Belt Thickness	10 mm

### CAPACITY:

Model – MCP – 56	25 cum/hr. maximum
Model – MCP – 56/650	50 cum/hr. maximum
	(Can handle up to 80 mm Aggregate size)
Charging Hopper	0.2 cum
Hydraulic Oil Tank	80 Litre
Fuel Tank	25 Litre
Water Tank	95 Litre

### DRIVE:

Engine Make, Model	Kirloskar HA – 294
Type	2 Stroke, Air-cooled
HP & RPM	25 Hp at 2000 rpm
Starting	12 V. D. C. Elect.

### TRANSMISSION:

Drive	Hydraulic
-------	-----------

FEATURES: (A) Belt Travel (B) Self Propelled Drive (C) Articulated Boom (D) Hydraulic Steering (Pivoting of Towing Wheel at 360°) (E) Elevating Boom  
Standard Accessories: Hour Meter, Hydraulic Oil-level, AMP Meter, Engine Oil Pressure Horn, Ignition Key, Ignition Display Light, 1 Meter Long elephant chute-6 Nos., Discharge chute-2 Nos., Tool Kit

Mobile Concrete Placer – MCP – 56 It can place Concrete of any mix at the rate of 25 cum/hr up to 8.5 Mtrs height and underground up to 6 mtrs.

Mobile Concrete Placer – MCP – 56/650, It can place Concrete of any mix at the rate of 50 cum/hr and can handle upto 80 mm aggregate up to 8.5 mtrs. height and underground up to 5 mtrs.

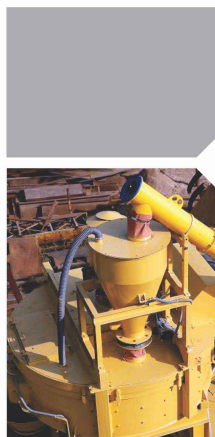
We also provide custom design for special application.

The reliable technology of our machine has convinced many users and will certainly convince you too.....

Specifications are subject to change without prior notice due to modification, alteration or custom engineering.

## MOBILE READY MIX CONCRETE PLANT

### MRMC - 25



#### SALIENT FEATURES:

- Available in 25 M<sup>3</sup>/hr. Capacity. • Rigid construction of main chassis is fabricated from rolled mild steel material. • Mixer – PAN type, for continuous mixing. • Replaceable Bottom Liner, Side Liner and Tips in the mixer. • Compact design for easy transportation with towing facility. • Loading of aggregate/Sand in hoppers by Wheel loader / JCB. • PLC based control panel with integral computerized batch controller to accommodate 9 different mix recipes. • Fully Automatic Plant with Electronic Weighing of Aggregate/Sand/Cement. • Water flow by digital meter or by Weight. • Plant can be erected & commissioned within two days. • Inbuilt Water and Additive tank. • Complete plant can be transported in 40 foot trailer. • Plant only requires Electric Power Supply, Water Piping / Aggregate Sand feeding.

TECHNICAL SPECIFICATION	
MODEL	SURELIA - 25
DIMENSIONS / BIN	4 BINS
Total Length	12 Meter
Total Width	2.4 Meter
Agg. Charging Height	3.2 Meter
PAN MIXER	
Output Rate	22 – 25 M <sup>3</sup> /hr
Output / Mix	1300 Litre
Mixer Motor	30 HP

MODEL	SURELIA - 25	Sr. No.	Description	HP
DIMENSIONS / BIN	4 BINS	1	Mixture	30 HP
Sand / Aggregate	2 / 4 Hopper	2	Power Pack	2 HP
Hopper Cap. Each	3.5 M <sup>3</sup>	3	Gathering Conveyor	7.5 HP
Water Tank	800 Litre	4	Compressor	5 HP
Water Pump	1 No.	5	Water Pump	3 HP
Additive Tank	Inbuilt	6	Bin Vibrator	0.25 HP
Additive Pump	1 No.	7	Additive Pump	1 HP
CONNECTED POWER	58.25 HP	8	Cement Screw Conveyor	7.5 HP
Weight(Approx)	10 Ton	9	Charging Conveyor	5 HP
			TOTAL	58.25 HP
		Optional	Discharge Conveyor	10 HP

**OPTIONAL:** • Discharge Conveyor. • Cement Silo.

## PORT HANDLING CONVEYOR



### APPLICATION: PORTS, YARDS AND WARE HOUSES

Conveying Material : Coke, Coal, Granshot, Clinker, Limestone, Bauxite, Aggregate and Much more.

#### TECHNICAL SPECIFICATION:

- 01) Rigid Tubular Structure Frame for Conveyor & Chassis.
- 02) Manual Steering Facility for easy Towing.
- 03) Available Belt Width – 750mm, 800mm, 900mm, 1000mm, 1200mm & 1500mm.
- 04) Capacity – 100 TPH to 1000 TPH.
- 05) Truck Un Loading Facility provided with Vibrating Screen.
- 06) Inlet Hopper fitted with Liner Plate.
- 07) Conveyor Length – 22.5 Meters.
- 08) Power Option - Engine Driven / Electric Driven.
- 09) Power Requirement 95 HP (80 HP for Belt Drive & 15 HP For Hydraulic Power Pack)
- 10) User Friendly Operating System Mounted on Conveyor.
- 11) Wheel fold facility under operational condition.

- 12) Provision of Stabilizing Jacks during Operation.
- 13) Tilting facility for easy transportation. (Head Section)
- 14) Discharge Height – 5.1 Meter.
- 15) Discharge Hopper for Controlled Discharge.
- 16) Belt Sway Switch.
- 17) Emergency Stop Switch. (Mounted on Conveyor & Chassis)
- 18) Self Aligning Carrying Idler & Return Idler.

#### OPTIONAL :

- 01) Belt Scale.
- 02) PLC Base Operating Panel (Electrical Driven).
- 03) Belt Drive Hydraulically OR Electrically.
- 04) Self Propelled Drive.



## READY MIX CONCRETE PLANT

RMC – 30  
RMC – 45  
RMC – 60  
RMC – 90



In accordance to produce the peak quality concrete requirement on site for the construction of mega civil projects, it has been designed to converse max flexibility by providing you the idyllic mixture of engineering with recognized components.

This plant is intended for the production of concrete at sites where the value, flexibility and performance are the vital structures to consider.

The strategic feature of plant is that, it can be set up in short space excluding major civil construction. It is relaxed for transportation, erection and disassembles when shifted to other location.

Our plant is studded with PLC base control panel with printing ability and imported gearbox with recognized make cement screw conveyor.

PLANT CAPACITY	UNIT	RMC 30	RMC 45	RMC 60	RMC 90
Compacted Concrete	m <sup>3</sup> /hr.	30	45	60	90
<b>MIXER SPECIFICATION</b>					
Type of Mixer		Pan Mixer	Twin Shaft Mixer	Twin Shaft Mixer	Twin Shaft Mixer
Mixer Capacity	m <sup>3</sup>	0.5	0.75	1	2
Input / Output Capacity	Lt.	1500 / 750	1500 / 1000	1500 / 1000	3000 / 2000
Motor Power	HP	30	20 x 2	25 x 2	50 x 2

<b>AGGREGATE BIN</b>					
No. of Compartment	No.	4	4	4	4
Capacity of Each Compartment	m <sup>3</sup>	10	10	15	20
Gathering Conveyor	HP	15	15	20	20
<b>WEIGHING SYSTEM</b>					
Aggregate Scale	Kg	Digital	Digital	Digital	Digital
Cement Scale	Kg	2000	3000	3000	6000
Water Scale	Kg	500	750	1000	1500
Additive Scale	Lt.	250	500	800	1500
	Kg	10	10	20	20
<b>WATER PUMP</b>					
Connected Power	HP	3	3	5	7.5
<b>Cement Screw Conveyor</b>					
Diameter	mm	219	219	219	273
Connected Power	HP	15	15	15	20
<b>AIR COMPRESSOR</b>					
Connected Power	HP	3	3	7.5	10
<b>CONTROL PANEL</b>					
		Fully Automatic	Fully Automatic	Fully Automatic	Fully Automatic
Total Connected Load	HP	66	76	97.5	157.5

The reliable technology of our machine has convinced many users and will certainly convince you too. Specifications are subject to change without prior notice due to modification, alteration or custom engineering.

## STOCK PILING CONVEYOR MASS CONCRETING CONVEYOR TRUCK UNLOADER



**CONVEYING MATERIAL :**  
Coke, Coal, Granshot, Clinker, Limestone, Bauxite, Concrete, Aggregate and Much more.

### TECHNICAL SPECIFICATION:

- 01) Rigid Tubular Structure Frame for Conveyor & Chassis.
- 02) Self Propelled Drive.
- 03) Available Belt Width – 750mm, 800mm, 900 mm, 1000 mm, 1200 mm & 1500 mm.
- 04) Capacity – 100 TPH to 500 TPH.
- 05) Conveyor Length – 20 Meters to 45 Meters.
- 06) Luffing Facility Minimum 5 Meters to Maximum 14 Meters.
- 07) Power Option - Engine Driven / Electric Driven.
- 08) User Friendly Operating System Mounted on Conveyor.
- 09) Wheel fold facility for Transverse Movement and Radial Movement.
- 10) Provision of Stabilizing Jacks during Operation.
- 11) Tilting facility for easy transportation. (Head Section)

- 12) Discharge Height – 14 Meter.
- 13) Discharge Hopper for Controlled Discharge.
- 14) Provision of Charging Hopper.
- 15) Charging Height Minimum 2.5 Meters.
- 16) Operator Seating Arrangement for Convenience.
- 17) Belt Sway Switch.
- 18) Emergency Stop Switch. (Mounted on Conveyor & Chassis)
- 19) Self Aligning Carrying Idler & Return Idler.

### OPTIONAL :

- 01) Belt Scale.
- 02) PLC Base Operating Panel (Electrical Driven).
- 03) Belt Drive Hydraulically or Electrically Operated.

## TRUCK MOUNTED CONCRETE PLANT

TMCB – 15  
TMCB – 20



### SALIENT FEATURES :

- Available in 15/20 m<sup>3</sup>/hr. Capacity. • Quick mobility. • No foundation required for installation. • Rigid construction of main chassis; fabricated from rolled mild steel material. • Mixer – PAN type for continuous mixing • Planetary Gear box for mixer drive. • Replaceable Bottom liner, Side liner and Tips in the mixer. • Inbuilt Water and Additive tank. • Fully Automatic Plant with Electronic Weighing of Aggregate/Sand/Water/Cement. • Accommodates 9 different mix recipes. • PLC based Control system facility of Automatic & Manual mode, Cable remote type control Device, print facility. • USB based removable storage. • Plant only requires Electric Power Supply, Water / Aggregate Sand feeding.

"We also fulfill the customer's need providing custom design"

The reliable technology of our machine has convinced many users and will certainly convince you too.....

Specifications are subject to change without prior notice due to modification, alteration or custom engineering.

### TECHNICAL SPECIFICATION

MODEL	TMCB-20
Aggregate Storage Hopper	1/2 Hopper
Batch Size	0.6 M <sup>3</sup>
Aggregate Storage Hopper	
Each Bin capacity	2.5 M <sup>3</sup>
No. of Aggregate Silo	2 Nos.
Pan type Mixer Capacity	1300 Litre
Sand Hopper Capacity	3 M <sup>3</sup>
Sand belt conveyor	1 No.
Sand Bin Vibrator	2 Nos.
Cement Feeding Hopper	1 No.
Capacity 25 bags	1 No.
Cement Screw Conveyor	01 No.
PLC based Control system with facility of Automatic & Manual mode, Cable-remote type control Device, print facility & USB Mass storage	WAM Italy make (Without printer)

DESCRIPTION	TMCB-20
Water Pump	1 No.
Additive Tank & Pump	Inbuilt
Water Tank Capacity	800 Litre
Rotating Discharge Chute	1 No.
Power required	61 HP
Weight (approx)	8 Ton.
TOTAL ELECTRICAL LOAD IN (HP)	
DESCRIPTION	HP
Mixer Motor	30
Sand Belt Conveyor	7.5
Cement Screw Conveyor	7.5
Belt Conveyor for Aggregate Silo (2 Nos. x 5 HP)	10
Water Pump	3
Power Pack (Mixer Gate Open & Close)	2
Additive Pump	1
Sand Bin Vibrator (2 Nos. x 0.25 HP)	0.5
Cement Hopper Vibrator	0.5
<b>TOTAL</b>	<b>61</b>

**OPTIONAL:** Discharge Belt Conveyor



## WALK BEHIND VIBRATORY ROLLER VIBROTECH T – 80 SLOPE COMPACTOR VIBRATORY ROLLER



Due to its compact design, the VIBROTECH T-80 is the ideal roller for small repairs in both Base and asphalt courses, Widening of roads, Horticulture, Landscape Gardening, Internal roads in complex.

Its low overall height and closely set drums provides a clear view of the entire working area, ensuring high manoeuvrability. Inspite of its relatively low weight, the use of double drums, ensures high Compaction performance & has necessary gradient climbing ability.

NO GEAR BOX, HYDRAULIC DRIVE hence VERY LESS DOWN TIME No failure, Total Maintenance Free Machine.

Speed for Forward & Reverse motion remains same and being Hydraulic, it has more power then Mechanical Type Rollers. Double compaction with each pass.

FEATURES: Two "V" belts for synchronizing the action of both vibrators. The eccentric weights are positioned at 180° Out of phase to each other.

DRIVE: Traction drive via hydraulic motor. Positive with spring action.

OPERATING: Individual control lever for the travel and vibration, located at easy reach.

SLOPE COMPACTOR VERSION OF VIBROTECH T-80

A Slope compactor with Hydraulic Drive and Vibration having same features as Walk Behind Roller. Working shall be as under:

On slope of 1:2 to 1:1.5, a pair of compactor works on CONUNTERBALANCE PRINCIPAL i.e. Two compactor (ONE at top and other at bottom of slope) has to be linked via wire rope pulley having supported with Loaded truck at the top. The two compactors with individual operator have to operate Single lever simultaneously downward and upward direction from two ends of slope

### Technical Specification

#### WEIGHT / MEASUREMENTS:

Static Weight	KGS.	800
Drum Width	mm.	600
Drum Dia	mm.	400
Drum Shell Thickness	mm.	10

#### VIBRATION:

System	Hydraulic
Frequency	Hz 50
Centrifugal	KN 19.6
Total Applied Force	KGS. 2800

#### DRIVE:

Air-cooled Diesel Engine Greaves	
Type	GA-75
Model	G-1510
Performance	KWHHP 7.4 / 10 (54.627 x 3600 rpm)
Travel Speed	Km/Hr 0 – 2.5

#### CAPACITY:

Hydraulic Oil Tank	Litres	25
Fuel Tank Capacity	Litres	5.5
Water**	Litres	25

\*Both tank for oil. (Slope Compactor)

\*\*One tank for water and another for hydraulic oil.

#### GRADABILITY:

With Vibration	30°
Without Vibration	35°

#### TRANSMISSION:

Drive	Hydraulic
Vibration	Hydraulic

#### OPTIONAL ACCESSORIES:

1. Water Sprinkler Type Gravity
2. Remote Mounting 12 V Dynastart with pulley
3. 12 V Electric Start

## WALK BEHIND VIBRATORY ROLLER VIBROTECH T – 80S



"The Mobility of walk behind rollers improves compaction power. They are used for Soil, Granular, Asphalt, Trenches and on Embankments"

#### WEIGHT / MEASUREMENTS:

Static Weight	KGS.	800
Drum Width	mm.	600
Drum Dia	mm.	400
Drum Shell Thickness	mm.	10

#### VIBRATION:

System	Hydraulic
Frequency	Hz 50
Centrifugal	KN 19.6
Total Applied Force	KGS. 3000

#### DRIVE:

Air-cooled Diesel Engine Electric Start	
Make	Greaves Cotton Ltd
Type	GA-75
Model	G-1510
Performance	KWHHP 7.4 / 10 (54.627 x 3600 rpm)
Travel Speed	Km/Hr 0 – 2.5

#### CAPACITY:

Hydraulic Oil Tank	Litre 45
Fuel Tank Capacity	Litre 5.5
Water	Litre 45

#### GRADABILITY:

With Vibration	30°
Without Vibration	35°

#### TRANSMISSION:

Drive	Hydraulic
Vibration	Hydro Electric

#### MIMIC

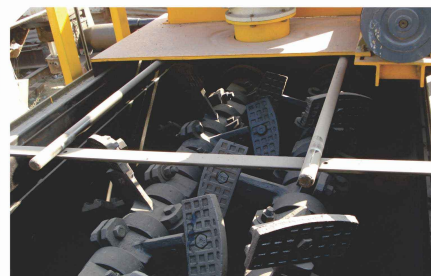
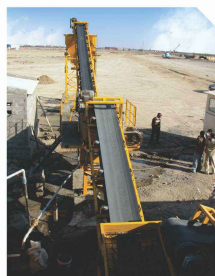
- Engine Start Ignition Key
- Vibration – ON – OFF
- Front Light – ON – OFF
- Ignition Lamp

## WET MIX MACADAM PLANT

WMM — 100 TPH

WMM — 160 TPH

WMM — 200 TPH



### FEATURES:

**1 FOUR BIN SYSTEM:** 4 Bin aggregate feeder unit with storage bin of 12 MT for 100 TPH and 19 MT for 160 / 200 TPH. Feeder bins are provided with auxiliary belt conveyor and sand bin is provided with vibrator.

Steep bin walls and valley angles allow free flow of aggregates from the feeders minimizing hang up of materials in the corners and bridging with sticky aggregates. The bins are equipped with adjustable gates. The belt feeders can have either fixed or variable speed drives. The optional variable speed drive with proportional controls, offers greater flexibility and accuracy of operation.

**2 PUG MILL UNIT:** The twin shaft pug mill design provides fast, continuous and homogenous mixing of aggregates. The shafts are mounted on extra heavy duty anti-friction bearings for smooth function and extended life. The wear resistant alloy steel is selected for paddle arm and tips for ensuring long life. The liner plates are corrosion and abrasion resistant.

**3 WATER ARRANGEMENT:** Self-priming pump and spray bar with water flow meter for accurate metering. Controlled from the main operating panel.

**4 CONTROLS AND AUTOMATION:** The weather protected cabin houses the user-friendly controls that are specifically designed for construction site condition. The control panel ensures sequential operation of the various drives and precise control. An emergency stop switch is provided near the pug mill unit for additional safety.

**5 STORAGE SILO:** The storage silos of 12 Ton in 100 TPH (Option as required) & 25 Ton in 160 and 200 TPH is easy to erect. Anti Segregation hopper at discharge point minimizes mix segregations. Fast opening hydraulically operated gates facilitate quick discharge of mix material into the truck without segregation.

Plant Model	WMM	WMM	WMM	Pug Mill				
	100	160	200	No. of Paddle Arms		22	30	30
Rated Output	TPH	100	160	Drive Motor	HP	30	40	60
Four Bin Feeder		100	160	Capacity	m <sup>3</sup>	1.5	2	2.5
No. of Bins*/Total Capacity	Nos / MT.	4 / 12	4 / 19	Water Pump	HP	3	3	3
Bin Charging Width	mtrs	2.9	2.9	Water Tank - Optional				
Auxiliary Drive Motor	HP	2 / 4	3 / 4	Capacity	Litre	12000	12000	12000
Gathering Conveyor Belt (Width)	mm	600	750	Load Out Conveyor with Storage Silo (Optional with WMM 100)				
Gathering Drive Motor	HP	7.5	10	Belt (Width)	mm	600	750	750
Bin Vibrator (1 No.)	HP	0.5	1	Drive Motor	HP	10	12.5	15
Over Size Removal Screen				Storage Silo Capacity*	Mt	12.5	25	25
Mesh Size	mm	65 x 65	65 x 65	Hydraulic Power Pack	HP	3	5	5
Drive Motor	HP	3	3	Total Connected Load				
Charging Conveyor	mm	600	750	HP	45.5	97	119.5	
Conveyor Belt (Width)	mm	600	750	Recommended Genset Capacity				
Conveyor Drive Motor	HP	7.5	7.5	KVA	82.5	125	175	